

PATTERN

Bell Bag



Yarn **Worsted Weight** in **Gold, Maroon & Cherry Red**

Gauge **5 x 6 = 2" x 2"**

Hook **F / 3.75mm**

Extras **Needle**

Abbreviations

- sc - single crochet
- sl st - slip stitch
- sk st - skip stitch
- wc - waistcoat stitch
- inc - two stitches in same space
- dec - two stitches worked together
- hdc - half double crochet
- inc hdc - two hdc in same space
- () - repeat around or number of times specified

Waistcoat Stitch

The waistcoat stitch is what creates a great, dense fabric for this project.

A waistcoat stitch is worked identically to a single crochet, except you go **through** the post of the next single crochet, under the horizontal bar and between the legs

Pattern Notes

All rounds are worked in a spiral without joining rounds unless otherwise specified.

When changing colors, end the stitch previous by pulling through the next color.

If you find the waistcoat stitch too tight, most people can create a good solid fabric with a single crochet or X single crochet!

Instructions

Make magic ring

Rnd 1: 6 sc in magic ring - 6

Rnd 2: (inc) around - 12

Rnd 3: (inc, wc) around - 18

Rnd 4: (inc, 2 wc) around - 24

Rnd 5: (inc, 3 wc) around - 30

Rnd 6: (inc, 4 wc) around - 36

Rnd 7: (inc, 5 wc) around - 42

Rnd 8: (inc, 6 wc) around - 48

Rnd 9-12: (wc) around - 48

Rnd 13-22: Work chart row, (wc) around - 48

Rnd 23: Work chart row 11, work 3 wc together in burgundy at the star tip, continue to (wc) around with Saffron - 48

Rnd 24: Work chart row 12, (wc) around - 46

Rnd 25-28: (wc) around - 46

Rnd 29: (sl st) around, sl st to join round - 46

Rnd 30: ch 2, (hdc, ch 1, sk st) once, (inc hdc, ch 1, sk st) once, (2 hdc, ch 1, sk st) around, sl st to join round - 48

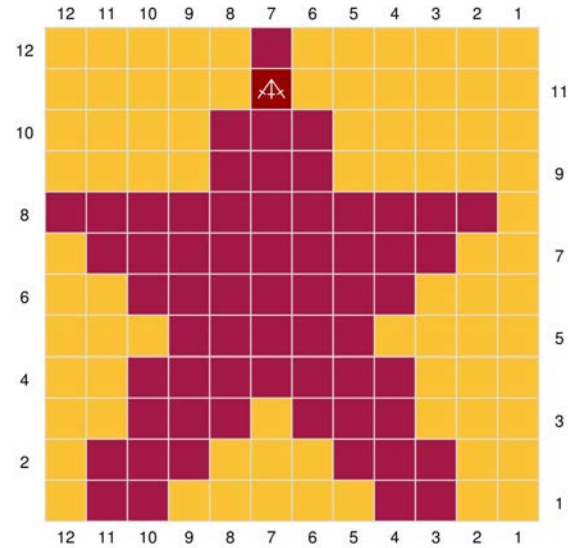
Rnd 31: sl st around, sl st to join round - 48

Rnd 32: ch 1, (3 sc, sk 2 st, 5 dc in next st, sk 2 st) six times, sl st to join round - 48

Rnd 33: ch 2, (3 hdc, inc hdc) around, sl st to join round - 60

Rnd 34: ch 2, (4 hdc, inc hdc) around, sl st to join round - 72

Cut tail and pull through to secure, weave in end



Red Heart Super Saver 0234 - Saffron
Red Heart Super Saver 0376 - Burgundy

Drawstring

Row 1: With Cherry Red, ch 80 or desired length

Row 2: turn work, sc starting in 2nd ch from hook across

Cut tail and pull through to secure, weave in end

Weave drawstring in ch 1 spaces in rnd 30

Store treasure!