

PATTERN

Spell Pouch



Yarn **Sugarwheel Cotton Solids Any Color**

Gauge **9 x 9 = 2" x 2"**

Hook **F / 3.75m**

Extras **Needle**

Abbreviations

- sc - single crochet
- sl st - slip stitch
- wc - waistcoat stitch
- inc - increase waistcoat stitch
- dec - decrease waistcoat stitch
- hdc - half double crochet
- () - repeat around or number of times specified

Waistcoat Stitch

The waistcoat stitch is what creates a great, dense fabric for this project.

A waistcoat stitch is worked identically to a single crochet, except you go **through** the post of the next single crochet, under the horizontal bar and between the legs

Pattern Notes

All rounds are worked in a spiral without joining rounds unless otherwise specified.

All charts are 12 x 12 stitches for consistency except for the mushroom. For the mushroom, you will do 5 waistcoat stitches after the chart row.

For repeating patterns like the gingham or houndstooth, you can work as written or repeat the pattern all the way around and ignore the 6 waistcoat stitches on either side of the chart.

When changing colors, end the stitch previous by pulling through the next color.

If you find the waistcoat stitch too tight, most people can create a good solid fabric with a single crochet or X single crochet!

Instructions

Make magic ring

Rnd 1: 6 sc in magic ring - 6

Rnd 2: (inc) around - 12

Rnd 3: (inc, wc) around - 18

Rnd 4: (inc, 2 wc) around - 24

Rnd 5: (wc) around - 24

** To work a repeating pattern around, work the chart rows twice and ignore the 6 wc stitches on either side

Rnd 6 - 18: 6 wc, {work chart row}, 6 wc - 24

Rnd 19 - 20: (wc) around - 24

** If you want a taller pouch continue for as many rows as desired!

Rnd 21: (sl st) around, sl st to join round - 24

** rnd 22 is worked in the tops of your last round of wc stitches, not in the slip stitches

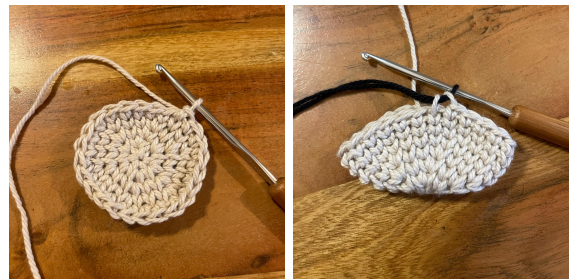
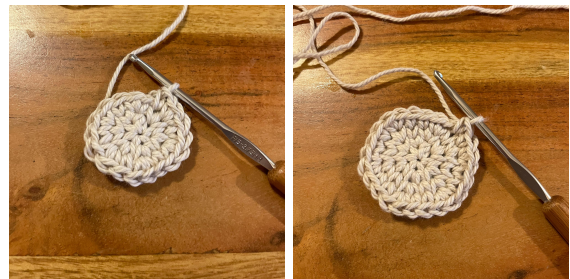
Rnd 22: ch 2 (counts as first hdc), (2 hdc, ch 1, sk st) around - 24

Rnd 23: (sl st) around, sl st to join round - 24

** rnd 24 is worked in the tops of the hdc & chs from rnd 22, not in the slip stitches

Rnd 24: (4 hdc in next st, sk st, sl st) around, sl st to join round - 8 ruffles

Cut tail and pull through to secure, weave in end





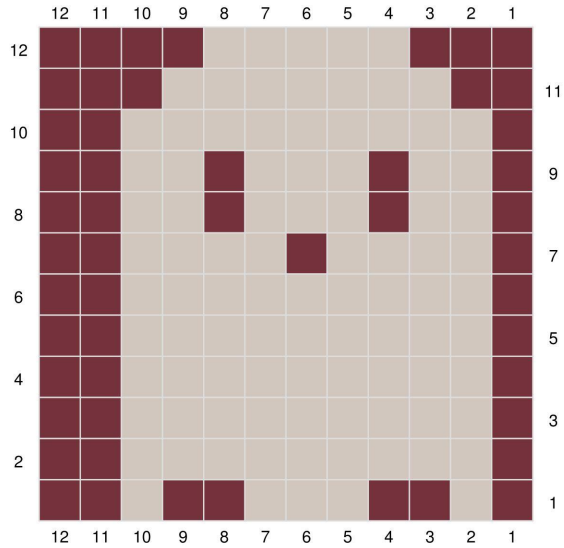
Lanyard

For the lanyard, ch to your desired length, I recommend 120 st for classic lanyard.

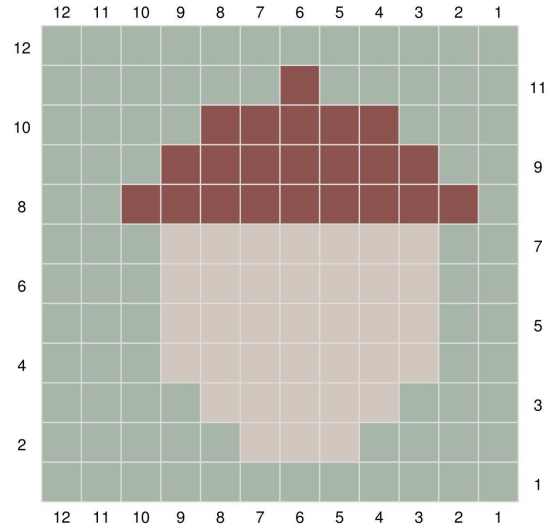
Feed lanyard through ch 1 spaces from rnd 11. Create circle with the lanyard with ends overlapping. Use tails to slip stitch across each side to secure then weave in ends.



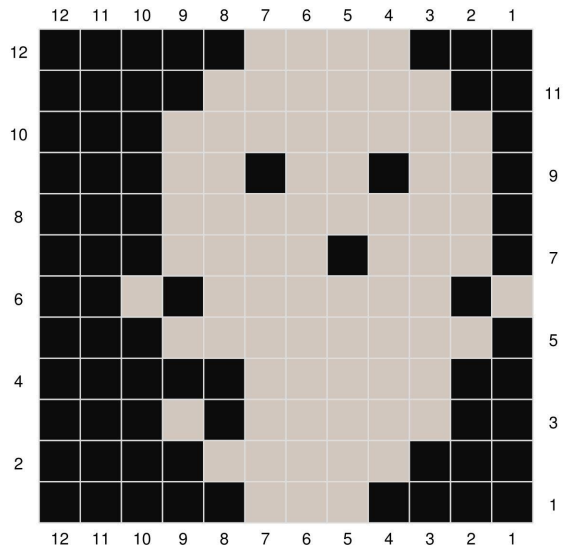
THE CRAFTER'S CAULDRON



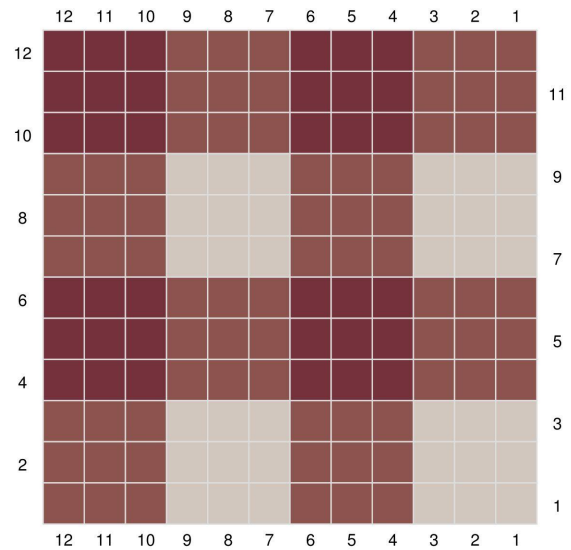
- Yarn Bee Sugarwheel Cotton Solids 14 - Merlot
- Yarn Bee Sugarwheel Cotton Solids 24 - Linen



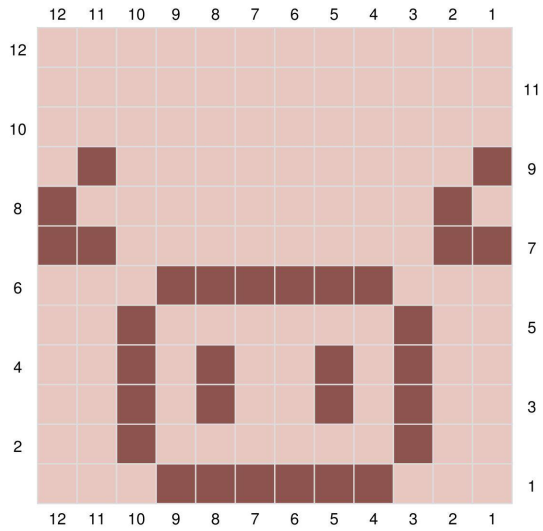
- Yarn Bee Sugarwheel Cotton Solids 22 - Muted Sage
- Yarn Bee Sugarwheel Cotton Solids 24 - Linen
- Yarn Bee Sugarwheel Cotton Solids 06 - Nutmeg



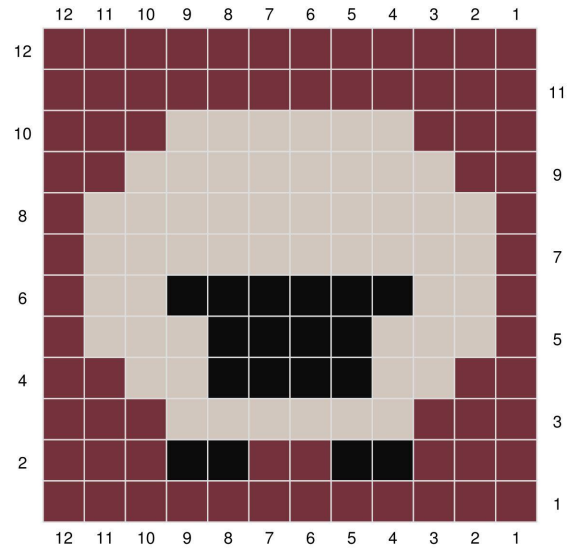
- Yarn Bee Sugarwheel Cotton Solids 24 - Linen
- Yarn Bee Sugarwheel Cotton Solids 02 - Ink Jet



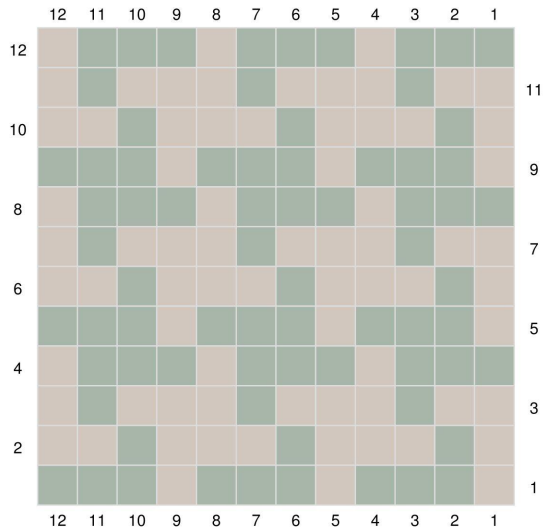
- Yarn Bee Sugarwheel Cotton Solids 14 - Merlot
- Yarn Bee Sugarwheel Cotton Solids 24 - Linen
- Yarn Bee Sugarwheel Cotton Solids 06 - Nutmeg



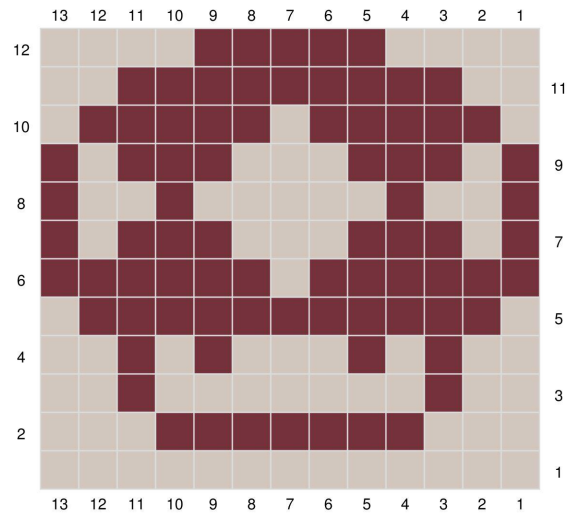
- Yarn Bee Sugarwheel Cotton Solids 12 - Velvet Blush
- Yarn Bee Sugarwheel Cotton Solids 06 - Nutmeg



- Yarn Bee Sugarwheel Cotton Solids 14 - Merlot
- Yarn Bee Sugarwheel Cotton Solids 24 - Linen
- Yarn Bee Sugarwheel Cotton Solids 02 - Ink Jet

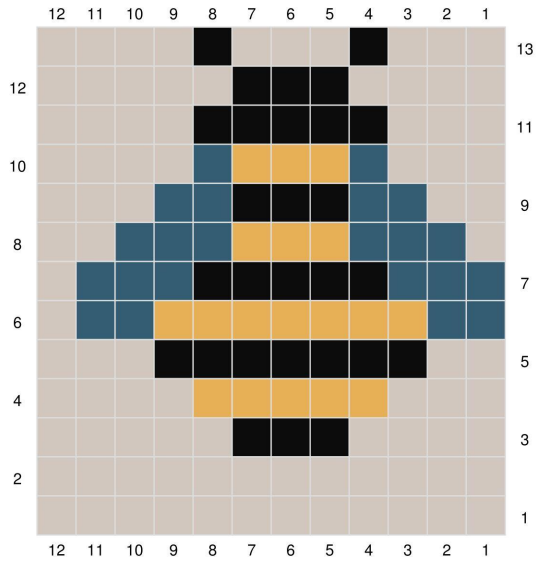


- Yarn Bee Sugarwheel Cotton Solids 22 - Muted Sage
- Yarn Bee Sugarwheel Cotton Solids 24 - Linen

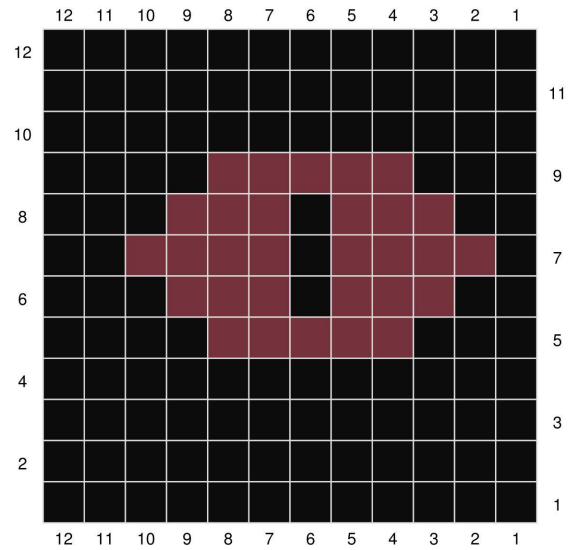


- Yarn Bee Sugarwheel Cotton Solids 14 - Merlot
- Yarn Bee Sugarwheel Cotton Solids 24 - Linen

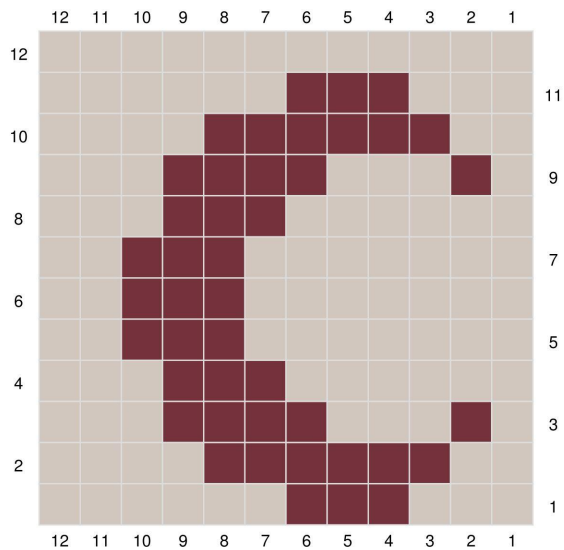
THE CRAFTER'S CAULDRON



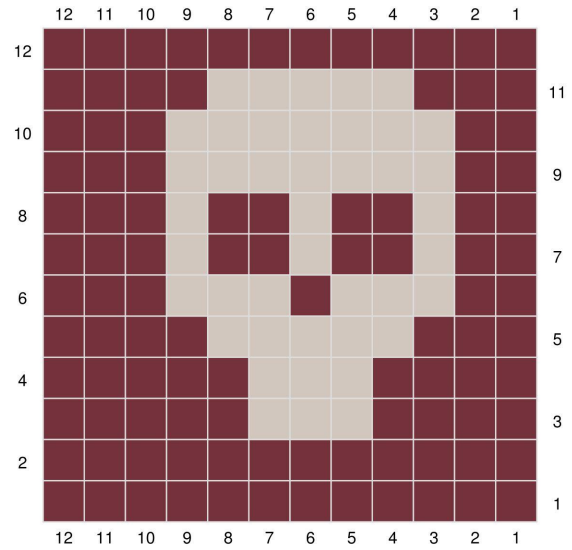
- Yarn Bee Sugarwheel Cotton Solids 08 - Daffodil Days
- Yarn Bee Sugarwheel Cotton Solids 17 - Endless Sea
- Yarn Bee Sugarwheel Cotton Solids 24 - Linen
- Yarn Bee Sugarwheel Cotton Solids 02 - Ink Jet



- Yarn Bee Sugarwheel Cotton Solids 14 - Merlot
- Yarn Bee Sugarwheel Cotton Solids 02 - Ink Jet

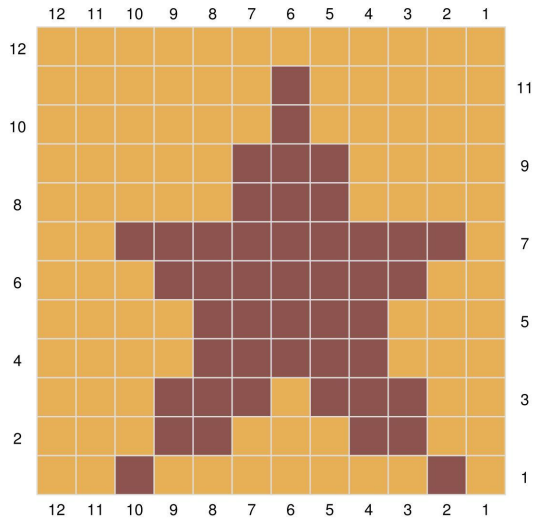


- Yarn Bee Sugarwheel Cotton Solids 14 - Merlot
- Yarn Bee Sugarwheel Cotton Solids 24 - Linen



- Yarn Bee Sugarwheel Cotton Solids 14 - Merlot
- Yarn Bee Sugarwheel Cotton Solids 24 - Linen

THE CRAFTER'S CAULDRON



-  Yarn Bee Sugarwheel Cotton Solids 08 - Daffodil Days
-  Yarn Bee Sugarwheel Cotton Solids 06 - Nutmeg