

PATTERN

Gingham Tarot Case & Reading Mat



Yarn

Color A - Sugarwheel Cotton - Endless Sea

Color B - Sugarwheel Cotton - Pacific

Color C - Sugarwheel Cotton - Overcast

Hook **Size F/5 -3.75mm Hook**

Gauge **None**

Extras **Needle, scissors**

Video Guide

<https://youtu.be/gFQDsAhupNw>

Abbreviations

- sl st - slip stitch
- sc - single crochet
- wc - waistcoat stitch
- inc - 2 stitch in same space
- dec - 2 stitches worked together
- dc - double crochet
- () - repeat stitches inside parentheses around or number of times specified

Waistcoat Stitch

The waistcoat stitch is what creates a great, dense fabric for this project.

A waistcoat stitch is worked identically to a single crochet, except you go **through** the post of the next single crochet, under the horizontal bar and between the legs.

For more information on how to do this stitch, please see the complete video guide for this pattern on youtube.

Notes

Video and photos use the color Ice Blue instead of Pacific, but I feel like Pacific would be a better choice for this piece.

The reading mat is worked with the Catherine's Wheel stitch.

This bag fits a standard deck of tarot cards. For larger decks, add stitches in multiples of 6 to maintain the gingham and Catherine's Wheel patterns.

Bag

The base of the bag is worked in the round with slip stitches at the end of each round and a ch 1 to start the next round.

With Endless Sea

Rnd 1: Foundation ch 17, ch 1

Rnd 2: sc 16, sc 4 in next st, sc 16, sc 4 in next st - 40

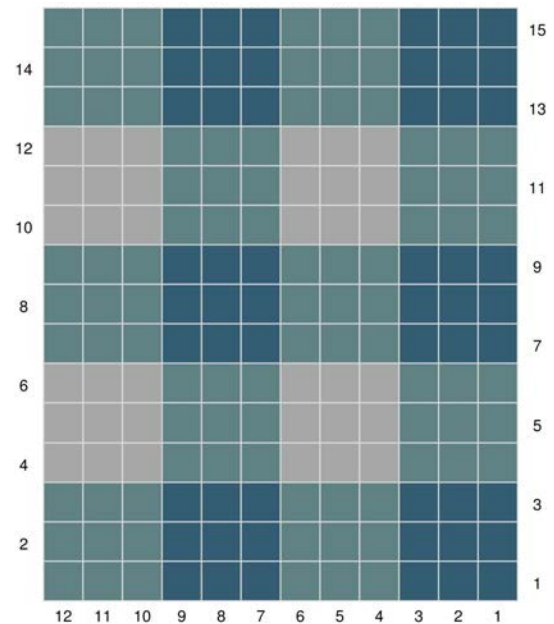
Rnd 3: (sc 17, winc, wc, winc) twice - 44




Rnd 4: (sc 17, winc, 3 wc, winc) twice - 48

We will now begin the gingham colorwork. You can reference the chart or follow along with the written pattern. We will work the gingham pattern for 15 rows total.

If you follow the written pattern, repeat the instructions given a total of eight times for a total of 48 stitches per round. Similarly, with the visual chart, repeat each row four times around for 48 stitches.

Begin each rnd with a ch 1, and finish with a sl st



-  Yarn Bee Sugarwheel Cotton Solids 17 - Endless Sea
-  Yarn Bee Sugarwheel Cotton Solids 05 - Overcast
-  Yarn Bee Sugarwheel Cotton Solids 20 - Pacific



Rnd 5: (Endless Sea) x 3, (Pacific) x 3

Rnd 6: (Endless Sea) x 3, (Pacific) x 3

Rnd 7: (Endless Sea) x 3, (Pacific) x 3

Rnd 8: (Pacific) x 3, (Overcast) x 3

Rnd 9: (Pacific) x 3, (Overcast) x 3

Rnd 10: (Pacific) x 3, (Overcast) x 3

Rnd 11: (Endless Sea) x 3, (Pacific) x 3

Rnd 12: (Endless Sea) x 3, (Pacific) x 3

Rnd 13: (Endless Sea) x 3, (Pacific) x 3

Rnd 14: (Pacific) x 3, (Overcast) x 3

Rnd 15: (Pacific) x 3, (Overcast) x 3

Rnd 16: (Pacific) x 3, (Overcast) x 3

Rnd 17: (Endless Sea) x 3, (Pacific) x 3

Rnd 18: (Endless Sea) x 3, (Pacific) x 3

Rnd 19: (Endless Sea) x 3, (Pacific) x 3

With Endless Sea

Rnd 20: (wc) around, sl st to end round - 48

Cut yarn

Reading Mat

We will now be working in rows, turning our work at the end of each row except the end of row 1. This section is worked with the Catherine's Wheel stitch.

With Endless Sea

Flatten the base of the bag so that the edges are lined up. We want to make 25 stitches to start the Catherine's wheel. Our first ch 1 will count as a single crochet.

Row 1: Re-attach yarn in stitch 44, sc in same space as ch 1, sk 2 st, make 7 dc in next space, sk 2 st, (sc, sk 2, make 7 dc, sk 2) for a total of 4 shells, sc, sl st across to beginning of rnd ** do not turn work!

Row 2: ch 3, start 3 dc, yarn over and pull through all 4 loops on hook, ch 1 to close cluster, ch 3, sc in top of shell from previous row, (ch 3, start 7 dc, yarn over and pull through all loops on hook, ch 1 to close cluster, ch 3, sc in top of shell) three times, ch 3, start 3 dc, yarn over and pull through all loops on hook, ch 1 to close cluster, turn

Row 3: ch 3, make 4 dc in same space, sc in sc at the top of shell, (make 7 dc in ch 1 closure from row previous, sc in sc at the top of shell) three times, make 4 dc in final ch 1 closure, ch 1, turn

Row 4: (ch 3, start 7 dc, yarn over and pull through all loops on hook, ch 1 to close cluster, ch 3, sc in top of shell) four times, sc in last stitch of row, ch 1, turn

Repeat rows 1-4 five times, then work row 1 one last time





Row 22: sl st 4 times to top of first shell, (ch 3, start 7 dc, yarn over and pull through all loops on hook, ch 1 to close cluster, ch 3, sc in top of shell) three times, ch 1, turn

Row 23: (make 7 dc in ch 1 closure from row previous, sc in sc at the top of shell) three times, ch 1, turn

Row 24: sl st 4 times to top of first shell, (ch 3, start 7 dc, yarn over and pull through all loops on hook, ch 1 to close cluster, ch 3, sc in top of shell) twice, ch 1, turn

Row 25: (make 7 dc in ch 1 closure from row previous, sc in sc at the top of shell) twice, ch 1, turn

Row 26: sl st 4 times to top of first shell, (ch 3, start 7 dc, yarn over and pull through all loops on hook, ch 1 to close cluster, ch 3, sc in top of shell) once, ch 1, turn

Row 27: (make 7 dc in ch 1 closure from row previous, sc in sc at the top of shell) once, sl st into row previous to end row, cut tail and pull through to secure.



Tie

Ch to desired length, I chained 100 for this example. Weave in ends and pull middle through the middle of our final wheel. Pull ends through the loop made and pull to secure.

Scalloped Edge

With Endless Sea

Re-attach Endless Sea at row 20, ch 1, work (7 dc in center of half wheel, sc in center of full wheel) down the side until you reach the bag. Sl st and cut tail, pull through to secure

On the other side, re-attach at row 1, ch 1, work (7 dc in center of half wheel, sc in center of full wheel) up the side until you reach row 20. Sl st and cut tail, pull through to secure.

Shameless Plug

If, like me, you are bad at remembering the meanings of every card, check out our iOS App, The Other One's Tarot Guide coming February 2023 in the Apple App Store!

