

PATTERN

Basketweave Water Bottle Holder



Yarn **Sugarwheel Cotton**

Hook **Size F/5 -3.75mm Hook**

Extras **Scissors, yarn needle**

Abbreviations

- sc - single crochet
- wc - waistcoat stitch
- inc - increase waistcoat stitch
- dec - decrease waistcoat stitch
- hdc - half double crochet
- sl st - slip stitch
- fphdc - front post half double crochet
- bphdc - back post half double crochet

Waistcoat Stitch

The waistcoat stitch is what creates a great, dense fabric for this project.

A waistcoat stitch is worked identically to a single crochet, except you go **through** the post of the next single crochet, under the horizontal bar and between the legs. We will use a waistcoat stitch for the colorworked chart portions of the piece and for the base.

Basketweave Stitch

For the basketweave stitch for the main fabric of this progress, we will repeat a pattern of front and back post half double crochets for three rows, then swap. So we will work four fphdc, then four bphdc around for three rows. Then, four bphdc followed by four fphdc for three more rows.



Instructions

9" Body

Base

Make Magic Ring. ch 1

Rnd 1: 6 sc in magic ring - 6

Rnd 2: (inc) around - 12

Rnd 3: (inc, wc) around - 18

Rnd 4: (inc, 2 wc) around - 24

Rnd 5: (inc, 3 wc) around - 30

Rnd 6: (inc, 4 wc) around - 36

Rnd 7: (inc, 5 wc) around, sl st to join round-
42

Rnd 8: ch 2, (hdc) around, sl st to join round-
42

Rnd 9: (sl st) around - 42

** Rnd 10 is worked in the tops of the hdc
from rnd 8, not through the slip stitches from
rnd 9

Rnd 10: ch2, dec hdc, (hdc) around, sl st to
join round - 41

Rnd 11: (sl st) around - 41

** Rnd 12 is worked in the tops of the hdc
from rnd 10, not through the slip stitches
from rnd 11

Rnd 12: ch 2, dec hdc, (hdc) around, sl st to
join round - 40

Continue to the next page to begin the body

Pattern Notes

Sizes

This pattern contains instructions for a 9"
and 7" body length written separately
followed by instructions to make the strap.

Colorwork Notes

When working on the colorwork portion of
this pattern, before you change colors, end
the previous stitch with your new color. So if
the next stitch is white, yarn over and pull
through the last two loops of your previous
wc with white, then start the white stitch.

This can get a little fiddly when switching
colors quickly, but I feel that it has a better
look.

This pattern references chart rows, see
attached charts for relevant rows. Ignore the
white squares around the pattern, only work
the number of stitches called for in the
pattern that will correspond to the colored
stitches on the chart.

When beginning a round of colorwork on the
right, I will grab the contrast color from the
left and wrap it in my new stitches as I go to
prevent long floats. You can also cut the
contrast color after each round but you will
have a lot of ends to weave in!

You might end up with some loops on the left,
but I find they are easier to deal with than
ends...

Body

Here, we will start working in the basket weave stitch and start incorporating the chart pattern. I've included three chart patterns with this pattern but I highly recommend *Stitch Fiddle* for making your own!

The ch 2 at the start of each round will not count for our stitch total. End each round with a slip stitch to join.

Rnd 13: ch 2, (4 fphdc, 4 bphdc) around - 40

Rnd 14: ch 2, 4 fphdc, 4 bphdc, 4 fphdc, 4 bphdc, 1 fphdc, {chart row 1 - 6 stitches}, 1 bphdc, 4 fphdc, 4 bphdc, 4 fphdc, 4 bphdc - 40

Rnd 15: ch 2, 4 fphdc, 4 bphdc, 4 fphdc, 2 bphdc {chart row 2 - 12 stitches}, 2 fphdc, 4 bphdc, 4 fphdc, 4 bphdc - 40

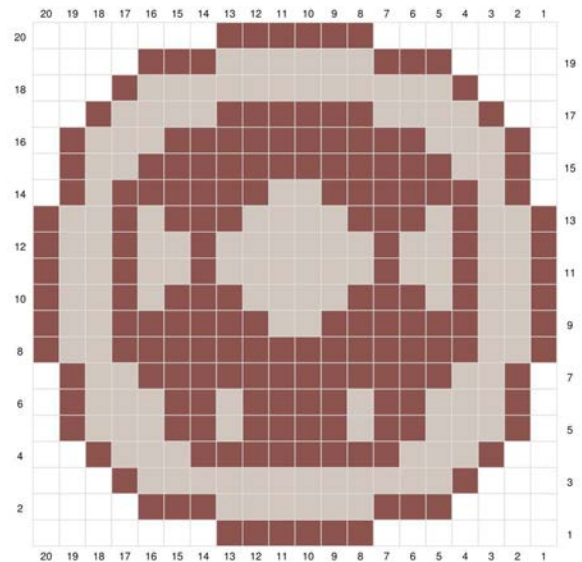
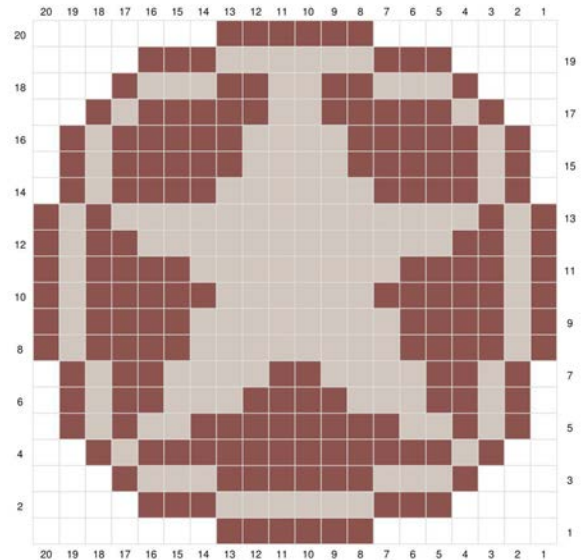
Rnd 16: ch 2, 4 bphdc, 4 fphdc, 4 bphdc, 1 fphdc {chart row 3 - 14 stitches}, 1 bphdc, 4 fphdc, 4 bphdc, 4 fphdc - 40

Rnd 17: ch 2, 4 bphdc, 4 fphdc, 4 bphdc, {chart row 4 - 16 stitches}, 4 fphdc, 4 bphdc, 4 fphdc - 40

Rnd 18: ch 2, 4 bphdc, 4 fphdc, 3 bphdc, {chart row 5 - 18 stitches}, 3 fphdc, 4 bphdc, 4 fphdc - 40

Rnd 19: ch 2, 4 fphdc, 4 bphdc, 3 fphdc, {chart row 6 - 18 stitches}, 3 bphdc, 4 fphdc, 4 bphdc - 40

Rnd 20: ch 2, 4 fphdc, 4 bphdc, 3 fphdc, {chart row 7 - 18 stitches}, 3 bphdc, 4 fphdc, 4 bphdc - 40



Rnd 21: ch 2, 4 fphdc, 4 bphdc, 2 fphdc, {chart row 8 - 20 stitches}, 2 bphdc, 4 fphdc, 4 bphdc - 40

Rnd 22: ch 2, 4 bphdc, 4 fphdc, 2 bphdc, {chart row 9 - 20 stitches}, 2 fphdc, 4 bphdc, 4 fphdc - 40

Rnd 23: ch 2, 4 bphdc, 4 fphdc, 2 bphdc, {chart row 10 - 20 stitches}, 2 fphdc, 4 bphdc, 4 fphdc - 40

Rnd 24: ch 2, 4 bphdc, 4 fphdc, 2 bphdc, {chart row 11 - 20 stitches}, 2 fphdc, 4 bphdc, 4 fphdc - 40

Rnd 25: ch 2, 4 fphdc, 4 bphdc, 2 fphdc, {chart row 12 - 20 stitches}, 2 bphdc, 4 fphdc, 4 bphdc - 40

Rnd 26: ch 2, 4 fphdc, 4 bphdc, 2 fphdc, {chart row 13 - 20 stitches}, 2 bphdc, 4 fphdc, 4 bphdc - 40

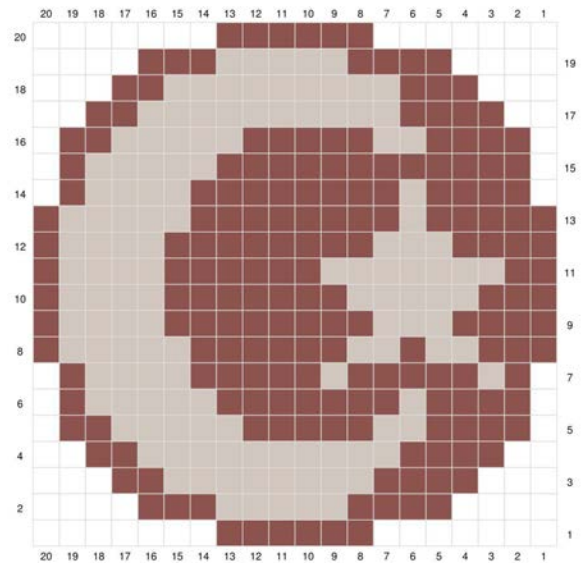
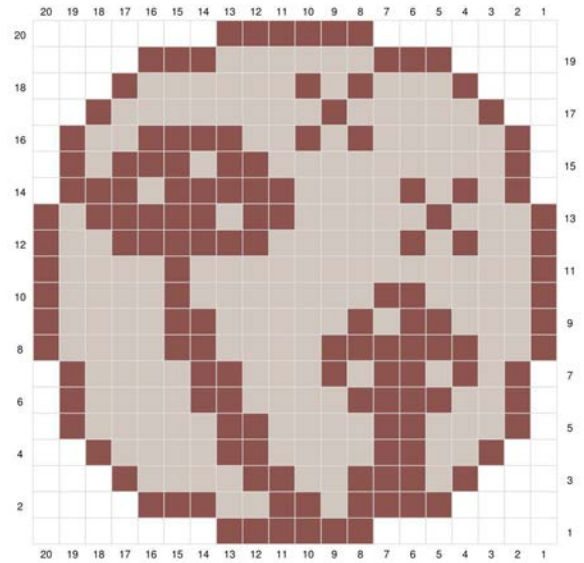
Rnd 27: ch 2, 4 fphdc, 4 bphdc, 2 fphdc, 1 hdc {chart row 14 - 18 stitches} 1 hdc, 2 bphdc, 4 fphdc, 4 bphdc - 40

Rnd 28: ch 2, 4 bphdc, 4 fphdc, 3 bphdc, {chart row 15 - 18 stitches}, 3 fphdc, 4 bphdc, 4 fphdc - 40

Rnd 29: ch 2, 4 bphdc, 4 fphdc, 3 bphdc, {chart row 16 - 18 stitches}, 3 fphdc, 4 bphdc, 4 fphdc - 40

Rnd 30: ch 2, 4 bphdc, 4 fphdc, 3 bphdc, 1 hdc {chart row 17 - 16 stitches}, 1 hdc, 3 fphdc, 4 bphdc, 4 fphdc - 40

Rnd 31: ch 2, 4 fphdc, 4 bphdc, 4 fphdc, 1 hdc, {chart row 18 - 14 stitches}, 1 hdc, 4 bphdc, 4 fphdc, 4 bphdc - 40



Rnd 32: ch 2, 4 fphdc, 4 bphdc, 4 fphdc, 1 bphdc, 1 hdc {chart row 19 - 12 stitches}, 1 hdc, 1 fphdc, 4 bphdc, 4 fphdc, 4 bphdc - 40

Rnd 33: ch 2, 4 fphdc, 4 bphdc, 4 fphdc, 2 bphdc, 3 hdc, {chart row 20 - 6 stitches}, 3 hdc, 2 fphdc, 4 bphdc, 4 fphdc, 4 bphdc - 40

Rnd 32: ch 2, 4 bphdc, 4 fphdc, 4 bphdc, 4 fphdc, 1 bphdc, 6 hdc, 1 fphdc, 4 bphdc, 4 fphdc, 4 bphdc, 4 fphdc - 40

Rnd 35: ch 2, (4 bphdc, 4 fphdc) around - 40

Rnd 36: ch 2, (4 bphdc, 4 fphdc) around - 40

Rnd 37: ch 2, (4 fphdc, 4 bphdc) around - 40

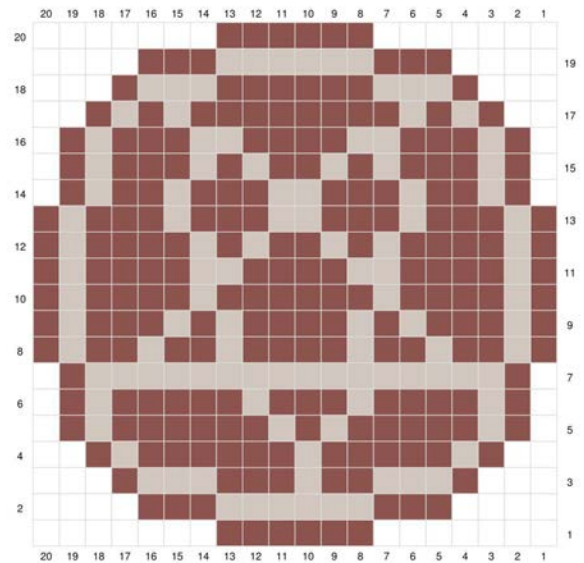
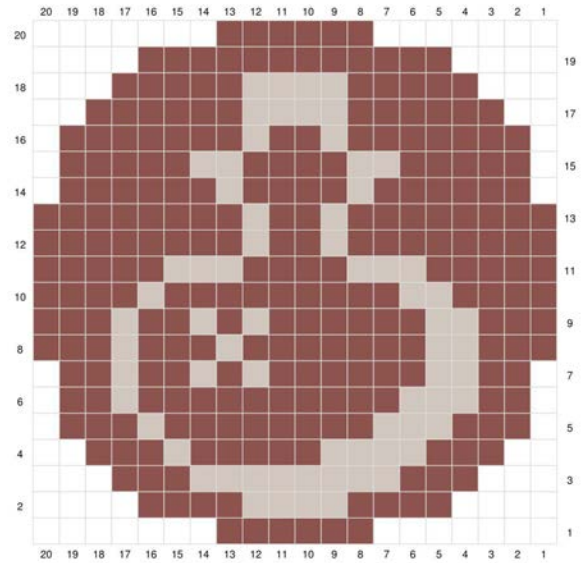
Rnd 38: ch 2, (4 fphdc, 4 bphdc) around - 40

Rnd 39: ch 2, (4 fphdc, 4 bphdc) around - 40

Rnd 40: (sl st) around - 40

** Rnd 41 is worked in the tops of the hdc from rnd 39, not through the slip stitches from rnd 40

Rnd 41: (sl st) around - 40





7" Body

Base

Make Magic Ring. ch 1

Rnd 1: 6 sc in magic ring - 6

Rnd 2: (inc) around - 12

Rnd 3: (inc, wc) around - 18

Rnd 4: (inc, 2 wc) around - 24

Rnd 5: (inc, 3 wc) around - 30

Rnd 6: (inc, 4 wc) around - 36

Rnd 7: (inc, 5 wc) around, sl st to join round -
42

Rnd 8: ch 2, dec hdc, (hdc) around, sl st to join
round - 41

Rnd 9: (sl st) around - 41

** Rnd 10 is worked in the tops of the hdc
from rnd 8, not through the slip stitches from
rnd 9

Rnd 10: ch2, dec hdc, (hdc) around - 40

Continue to the next page to begin the body

Body

Here, we will start working in the basket weave stitch and start incorporating the chart pattern. I've included three chart patterns with this pattern but I highly recommend *Stitch Fiddle* for making your own!

The ch 2 at the start of each round will not count for our stitch total. Each round ends with a slip stitch to join round.

Rnd 11: ch 2, (4 fphdc, 4 bphdc) around - 40

Rnd 12: ch 2, 4 fphdc, 4 bphdc, 4 fphdc, 4 bphdc, 1 fphdc, {chart row 1 - 6 stitches}, 1 bphdc, 4 fphdc, 4 bphdc, 4 fphdc, 4 bphdc - 40

Rnd 13: ch 2, 4 fphdc, 4 bphdc, 4 fphdc, 2 bphdc {chart row 2 - 12 stitches}, 2 fphdc, 4 bphdc, 4 fphdc, 4 bphdc - 40

Rnd 14: ch 2, 4 bphdc, 4 fphdc, 4 bphdc, 1 fphdc {chart row 3 - 14 stitches}, 1 bphdc, 4 fphdc, 4 bphdc, 4 fphdc - 40

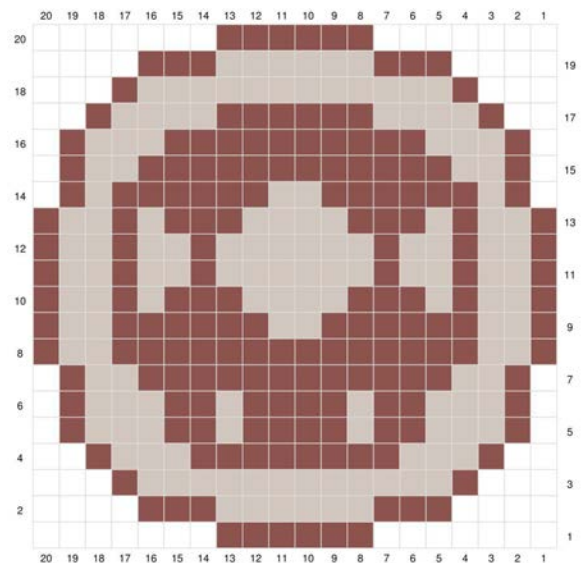
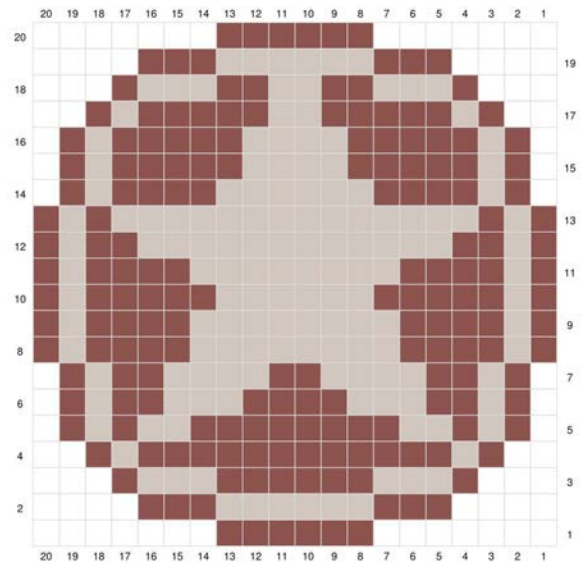
Rnd 15: ch 2, 4 bphdc, 4 fphdc, 4 bphdc, {chart row 4 - 16 stitches}, 4 fphdc, 4 bphdc, 4 fphdc - 40

Rnd 16: ch 2, 4 bphdc, 4 fphdc, 3 bphdc, {chart row 5 - 18 stitches}, 3 fphdc, 4 bphdc, 4 fphdc - 40

Rnd 17: ch 2, 4 fphdc, 4 bphdc, 3 fphdc, {chart row 6 - 18 stitches}, 3 bphdc, 4 fphdc, 4 bphdc - 40

Rnd 18: ch 2, 4 fphdc, 4 bphdc, 3 fphdc, {chart row 7 - 18 stitches}, 3 bphdc, 4 fphdc, 4 bphdc - 40

Rnd 19: ch 2, 4 fphdc, 4 bphdc, 2 fphdc, {chart row 8 - 20 stitches}, 2 bphdc, 4 fphdc, 4 bphdc - 40





Rnd 20: ch 2, 4 bphdc, 4 fphdc, 2 bphdc, {chart row 9 - 20 stitches}, 2 fphdc, 4 bphdc, 4 fphdc - 40

Rnd 21: ch 2, 4 bphdc, 4 fphdc, 2 bphdc, {chart row 10 - 20 stitches}, 2 fphdc, 4 bphdc, 4 fphdc - 40

Rnd 22: ch 2, 4 bphdc, 4 fphdc, 2 bphdc, {chart row 11 - 20 stitches}, 2 fphdc, 4 bphdc, 4 fphdc - 40

Rnd 23: ch 2, 4 fphdc, 4 bphdc, 2 fphdc, {chart row 12 - 20 stitches}, 2 bphdc, 4 fphdc, 4 bphdc - 40

Rnd 24: ch 2, 4 fphdc, 4 bphdc, 2 fphdc, {chart row 13 - 20 stitches}, 2 bphdc, 4 fphdc, 4 bphdc - 40

Rnd 25: ch 2, 4 fphdc, 4 bphdc, 2 fphdc, 1 hdc {chart row 14 - 18 stitches} 1 hdc, 2 bphdc, 4 fphdc, 4 bphdc - 40

Rnd 26: ch 2, 4 bphdc, 4 fphdc, 3 bphdc, {chart row 15 - 18 stitches}, 3 fphdc, 4 bphdc, 4 fphdc - 40

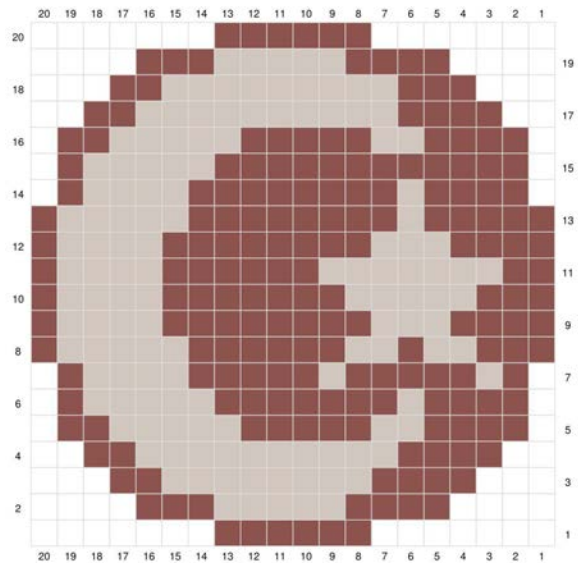
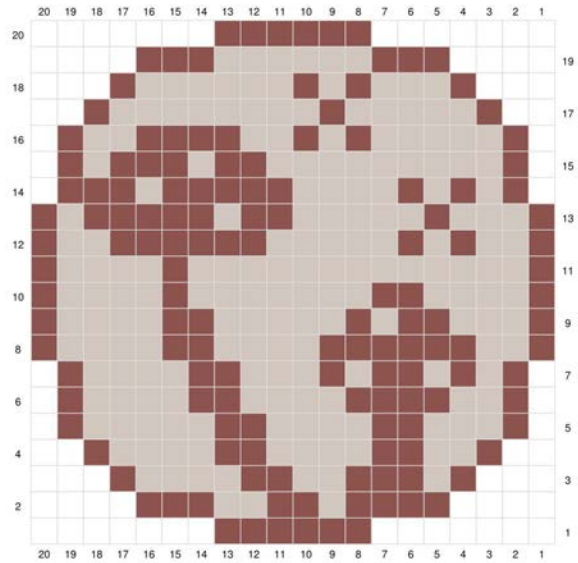
Rnd 27: ch 2, 4 bphdc, 4 fphdc, 3 bphdc, {chart row 16 - 18 stitches}, 3 fphdc, 4 bphdc, 4 fphdc - 40

Rnd 28: ch 2, 4 bphdc, 4 fphdc, 3 bphdc, 1 hdc {chart row 17 - 16 stitches}, 1 hdc, 3 fphdc, 4 bphdc, 4 fphdc - 40

Rnd 29: ch 2, 4 fphdc, 4 bphdc, 4 fphdc, 1 hdc, {chart row 18 - 14 stitches}, 1 hdc, 4 bphdc, 4 fphdc, 4 bphdc - 40

Rnd 30: ch 2, 4 fphdc, 4 bphdc, 4 fphdc, 1 bphdc, 1 hdc {chart row 19 - 12 stitches}, 1 hdc, 1 fphdc, 4 bphdc, 4 fphdc, 4 bphdc - 40

Rnd 31: ch 2, 4 fphdc, 4 bphdc, 4 fphdc, 2 bphdc, 3 hdc, {chart row 20 - 6 stitches}, 3 hdc, 2fphdc, 4 bphdc, 4 fphdc, 4 bphdc - 40

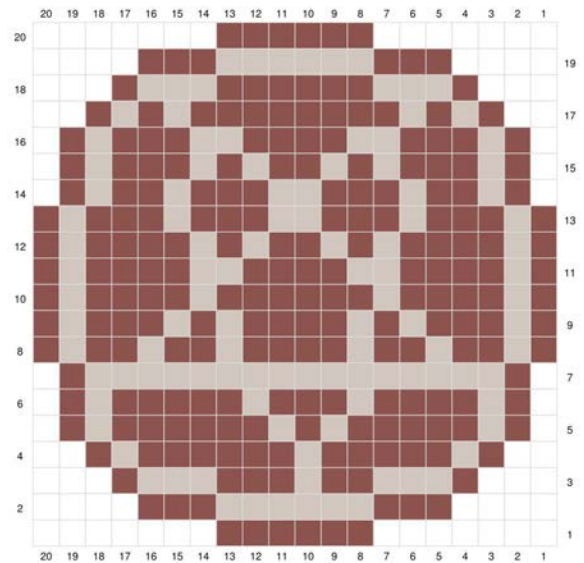
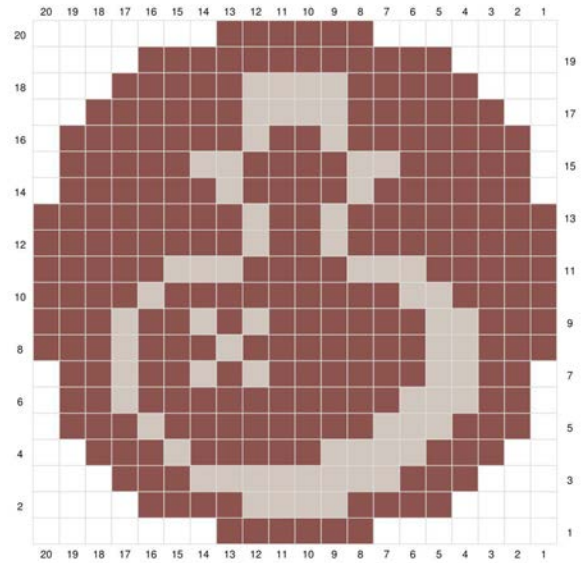


Rnd 32: ch 2, 4 bphdc, 4 fphdc, 4 bphdc, 4 fphdc, 1 bphdc, 6 hdc, 1 fphdc, 4 bphdc, 4 fphdc, 4 bphdc, 4 fphdc - 40

Rnd 33: (sl st) around - 40

** Rnd 34 is worked in the tops of the hdc from rnd 32, not through the slip stitches from rnd 33

Rnd 34: (sl st) around - 40





Strap

Adjust length as desired, 80 rows is a good place to start for a shorter strap, or just a few rows to clip to a bag!

Make slip stitch with long tail

Row 1: ch 7

Row 2: In 3rd loop from hook, dc across, turn
- 4

Row 3-desired length: ch 3, fpdc across - 4

Ch 1, cut long tail and pull through to secure.
Use tails of either side to secure strap to the inside of body, around 2" down for extra support.

Progress Photos





THE CRAFTER'S CAULDRON

